

EUROBLOC[®] VT



**Electric wire rope hoist
for load from 800 up to 100.000 kg**

 **VERLINDE**
LIFTING EQUIPMENT
EMMEGIESSE s.r.l.

Via Giovanni Falcone N° 8 41057 Spilamberto (MO) Italy
Tel 059/785979 Fax 059/785937 - www.emmegiesse.com - info@emmegiesse.com

EUROBLOC[®] VT

Electric wire rope hoist for load from 800 to 100.000 kg

CUSTOMISED INSTALLATIONS

Foot mounted.

These hoists are not equipped with a trolley and are used for applications where horizontal movement is not required.



Double girder trolley high, medium and low version

These hoists are fitted with a trolley for horizontal movement of loads and are designed to move particularly large loads.



Monorail trolley with standard headroom (HPN).

These hoists are fitted with a trolley and are used for applications where horizontal movement is required.



Monorail trolley with short headroom (HPR).

These hoists are fitted with a trolley for horizontal movement of loads and are designed to make optimal use of the height of lift and the limited space available.



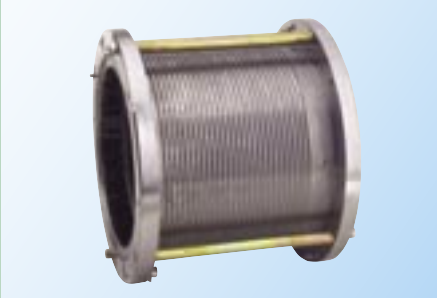
Hoisting Motor and Brake



Designed specifically for lifting, the 2-speed hoisting motor comes with all the necessary protections:

- Type IP 55 protection and F insulation class.
- Bimetal sensor
- Cooling fins enlarged significantly to encourage heat dissipation.

Hoisting drum



There is a special patent for drum assembly and drum rotation without ball bearings.

Advantage: this prevents grease and steel particles from falling into the motor.

Gear limit switches



The limit switch with 4 cams can be accessed on the gear unit and is used for managing the upper and lower limit switches of the hook, switching from low to high speed, and for managing phase reversals.



**High
lifetime**

Safety

Travelling. Variable travelling speed for precise positioning of loads.

Wire rope. in galvanized steel as a standard, high safety factor (factor 4,6 -FEM 2m).

Electrical cubicle. The cover can be folded back so that you can store your tools for maintenance (the cover has two steel safety wires to prevent it from falling).

MT2. Electronic control of the recording of hoist solicitation status.

Electrical. Low voltage control for more safety.

Traverse wheels. The 4 steering wheels are fully streamlined for improved safety.

Hook and pulley block. Rotating hook and pulley block with safety latch.

Easy maintenance

Hoisting motor. Motor cooling increased by 30 % (tunnel effect)

Hoisting brake . The brake is tested for hoist longevity under normal use conditions.

Steering motor-reducer. Steering reducer with one rail and a permanently lubricated connection.

Drum. The drum has been completely covered for better protection

Rope guide. Built "without spring" so that it can be more easily replaced during maintenance.

Electrical cubicle. The wires go in and out by means of steel plugs that can be unbound and that are built into the case

MT2. Calculation of the SWP (Safe Working Period)

Assembly is in modules, for easier management of spare parts for replacement

Surface treatment. 2- component epoxy paint with 120 μ for greater protection

LOC® VT

Load from 800 to 100.000 kg



Easy service

Ergonomics

Hook and pulley block. Ergonomical hook (area to grab and hold).

Push button box. Made with tinted polypropylene, grounded, with double insulation, ergonomical (IP 65 protection). Optional load display available

Electrical cubicle. Located on the side of the hoist, easily accessible. The open / close system uses a quick closure method.

Savings

Hoisting motor. 60 % operating factor and tropicalised as a standard for greater longevity

Travelling motor. Tropicalised as a standard for greater longevity

Pulley block. The best «C» dimension on the market for optimal use of the size of your buildings and optimal use of work areas

Travelling. Variable travelling speed to reduce wear on steering rollers

Load limiter. As ordered by the directive on "Machines" (required equipment). All EUROBLOC VTs are equipped with a load limiter as a standard (safety measure in the event of hoist overload). For greater longevity

Hook and pulley block. Doesn't take up much space, permanently lubricated rollers, pulleys are in GGG cast iron, very resistant. A high pulley / wire rope diameter ratio gives the wire rope greater longevity.

High technology

Pulley block. Only a small shift of the pulley block for hoisting (lifting is almost perfectly centred).

Rope guide. The guidance system does not get dirty, which allows for use in any type of environment.

Drum. A very high wire rope / drum diameter ratio (twice as large as the standard one), which:

- Increases the longevity of the wire rope.
- Reduces the approach data of the hoist.
- Reduces the "C" approach data of the hook.

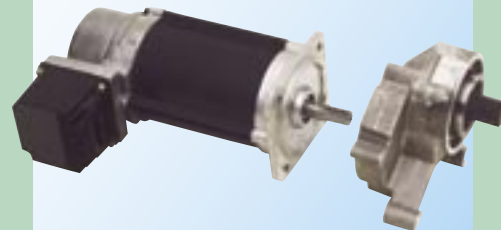
Electrical case. Quite large, it is equipped with the speed variation module as a standard

Lifting gearbox. Direct impulse gearbox unit, helicoid toothed gears, permanently lubricated, detector to prevent pressure overload.

Optimal positioning of steering rollers. The 4 steering rollers equally share the load in order to optimise your tracks

TMU

(Travelling motor unit)

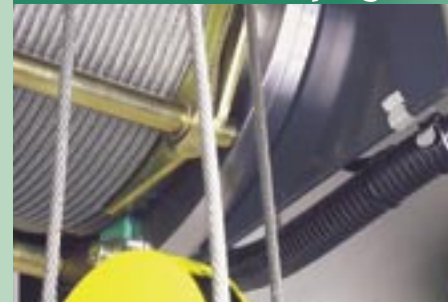


The compact travel motor, which is especially designed for travelling in lifting equipment, is equipped with a variable speed system that is a standard equipment. Maximum speed range is 2 to 32 m/min. IP 55 protection.

The motor is designed to ease any necessary maintenance:

- "Intelligent" easy system for motor positioning and assembly onto the trolley.
- The motor receives power from a single plug that can be unbound easily.

Rope guide



New rope guided system "very high performance" for difficult environments

MT2

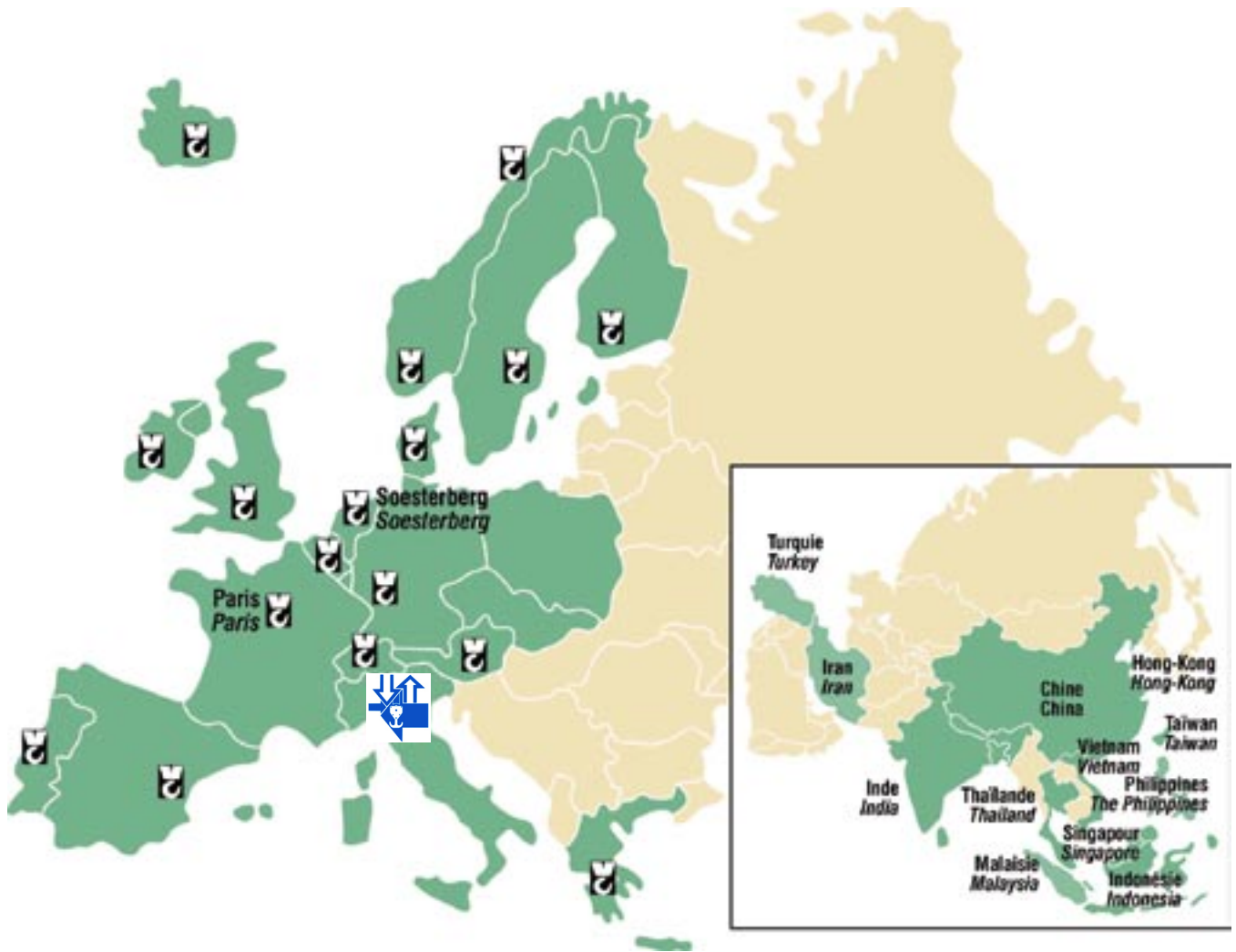


EUROBLOC VT can be equipped with the optional MONITOR 2 (Electronic control of the recording of the hoist's tractive effort states: SWP, time running, starts, overloads, temperature, load, brake, etc.)

EUROBLOC® VT

Electric wire rope hoist for load from 800 to 100.000 kg

HOIST Codification	Load (FEM/kg)			H.O.L. (m)	Lifting speeds (m/min.)	TROLLEYS					
	1Am	2m	3m			Fixed	Monorail		Double girder trolley		
							HPR	HPN	High	Med.	Low
VT10211--N P1		1 000	800	12	10 / 1,6	•	•	•	•	•	
VT10211--N P2		1 600	1 250	12 - 19	10 / 1,6	•	•	•	•	•	
VT10211--R P2		1 600	1 250	12 - 19	12,5 / 2	•	•	•	•	•	
VT10411--N P1		2 000	1 600	6 - 9,5	5 / 0,8	•	•	•	•	•	
VT10411--N P2		3 200	2 500	6 - 9,5	5 / 0,8	•	•	•	•	•	
VT10411--R P2		3 200	2 500	6 - 9,5	6,3 / 1	•	•	•	•	•	
VT20211--N P3		2 500	2 000	12 - 18 - 24 - 30*	10 / 1,6	•	•	•	•	•	
VT20211--R P4		2 500	2 000	12 - 18 - 24 - 30*	16 / 2,6	•	•	•	•	•	
VT20211--L P3	3 200			12 - 18 - 24 - 30*	8 / 1,3	•	•	•	•	•	
VT20411--N P3		5 000	4 000	6 - 9 - 12 - 15*	5 / 0,8	•	•	•	•	•	
VT20411--R P4		5 000	4 000	6 - 9 - 12 - 15*	8 / 1,3	•	•	•	•	•	
VT20411--L P3	6 300			6 - 9 - 12 - 15*	4 / 0,7	•	•	•	•	•	
VT20611--N P3		7 500		6 - 8 - 10	3,2 / 0,5	•	•	•	•	•	
VT20611--R P4		7 500		6 - 8 - 10	5 / 0,8	•	•	•	•	•	
VT20811--N P3	10 000	8 000		4,5 - 6 - 7,5	2,5 / 0,4	•	•	•	•	•	
VT20811--R P4	10 000	8 000		4,5 - 6 - 7,5	4 / 0,7	•	•	•	•	•	
VT30211--N P5		5 000	4 000	18 - 24 - 32 - 40*	10 / 1,6	•	•	•	•	•	
VT30211--R P6		5 000	4 000	18 - 24 - 32 - 40*	16 / 2,6	•	•	•	•	•	
VT30211--L P5	6 300			18 - 24 - 32 - 40*	8 / 1,3	•	•	•	•	•	
VT30411--N P5		10 000	8 000	9 - 12 - 16 - 20*	5 / 0,8	•	•	•	•	•	
VT30411--R P6		10 000	8 000	9 - 12 - 16 - 20*	8 / 1,3	•	•	•	•	•	
VT30411--L P5	12 500			9 - 12 - 16 - 20*	4 / 0,7	•	•	•	•	•	
VT30611--N P5		15 000		4,5 - 6 - 8 - 10	3,2 / 0,5	•	•	•	•	•	
VT30611--R P6		15 000		4,5 - 6 - 8 - 10	5 / 0,8	•	•	•	•	•	
VT30811--N P5	20 000	16 000		4,5 - 6 - 8 - 10	2,5 / 0,4	•	•	•	•	•	
VT30811--R P6	20 000	16 000		4,5 - 6 - 8 - 10	4 / 0,7	•	•	•	•	•	
VT30421--N P5		5 000	4 000	10 - 14 - 19 - 26 - 35 - 47	10 / 1,6	•	•	•	•	•	
VT30421--R P6		5 000	4 000	10 - 14 - 19 - 26 - 35 - 47	16 / 2,6	•	•	•	•	•	
VT30821--N P5		10 000	8 000	5 - 7 - 9,5 - 13 - 17,5 - 23,5	5 / 0,8	•	•	•	•	•	
VT30821--R P6		10 000	8 000	5 - 7 - 9,5 - 13 - 17,5 - 23,5	8 / 1,3	•	•	•	•	•	
VT31221--N P5		15 000	12 000	4,5 - 6,5 - 8,5 - 11,5 - 15,5	3,2 / 0,5	•	•	•	•	•	
VT31221--R P6		15 000	12 000	4,5 - 6,5 - 8,5 - 11,5 - 15,5	5 / 0,8	•	•	•	•	•	
VT31621--N P5	20 000	16 000		4,5 - 6,5 - 8,5 - 11,5	2,5 / 0,4	•	•	•	•	•	
VT31621--R P6	20 000	16 000		4,5 - 6,5 - 8,5 - 11,5	4 / 0,7	•	•	•	•	•	
VT40211--L P6	10 000	8 000	6 300	16,4 - 22 - 28,6 - 37	8 / 1,3	•	•	•	•	•	
VT40211--N P6		8 000	6 300	16,4 - 22 - 28,6 - 37	10 / 1,6	•	•	•	•	•	
VT40211--N P7	10 000			16,4 - 22 - 28,6 - 37	10 / 1,6	•	•	•	•	•	
VT40211--R P7		8 000	6 300	16,4 - 22 - 28,6 - 37	12,5 / 2	•	•	•	•	•	
VT40411--L P6	20 000	16 000	12 500	8,2 - 11 - 14,3 - 18,5 - 23,8	4 / 0,6	•	•	•	•	•	
VT40411--N P6		16 000	12 500	8,2 - 11 - 14,3 - 18,5 - 23,8	5 / 0,8	•	•	•	•	•	
VT40411--N P7	20 000			8,2 - 11 - 14,3 - 18,5 - 23,8	5 / 0,8	•	•	•	•	•	
VT40411--R P7		16 000	12 500	8,2 - 11 - 14,3 - 18,5 - 23,8	6,3 / 1	•	•	•	•	•	
VT40611--L P6	30 000	25 000		5,5 - 7,3 - 9,5 - 12,3 - 15,9	2,5 / 0,4	•	•	•	•	•	
VT40611--N P6		25 000		5,5 - 7,3 - 9,5 - 12,3 - 15,9	3,2 / 0,5	•	•	•	•	•	
VT40611--N P7	30 000			5,5 - 7,3 - 9,5 - 12,3 - 15,9	3,2 / 0,5	•	•	•	•	•	
VT40611--R P7		25 000		5,5 - 7,3 - 9,5 - 12,3 - 15,9	4 / 0,6	•	•	•	•	•	
VT40811--L P6	40 000			5,8 - 7,2 - 9,3 - 11,9	2 / 0,3	•	•	•	•	•	
VT40811--N P7	40 000			5,8 - 7,2 - 9,3 - 11,9	2,5 / 0,4	•	•	•	•	•	
VT41011--N P7		1Bm / 50 000		5,8 - 7,2 - 9,3 - 11,9	2 / 0,3	•	•	•	•	•	
VT40421--L P6	10 000	8 000	6 300	20 - 25,7 - 33	8 / 1,3	•	•	•	•	•	
VT40421--N P6		8 000	6 300	20 - 25,7 - 33	10 / 1,6	•	•	•	•	•	
VT40421--N P7	10 000			20 - 25,7 - 33	10 / 1,6	•	•	•	•	•	
VT40421--R P7		8 000	6 300	20 - 25,7 - 33	12,5 / 2	•	•	•	•	•	
VT40821--L P6	20 000	16 000	12 500	10 - 12,8 - 16,5 - 21,2 - 27,9 - 33,7	4 / 0,6	•	•	•	•	•	
VT40821--N P6		16 000	12 500	10 - 12,8 - 16,5 - 21,2 - 27,9 - 33,7	5 / 0,8	•	•	•	•	•	
VT40821--N P7	20 000			10 - 12,8 - 16,5 - 21,2 - 27,9 - 33,7	5 / 0,8	•	•	•	•	•	
VT40821--R P7		16 000	12 500	10 - 12,8 - 16,5 - 21,2 - 27,9 - 33,7	6,3 / 1	•	•	•	•	•	
VT41221--L P6	30 000	25 000		6,6 - 8,5 - 11 - 14,1 - 18,6 - 22,4	2,5 / 0,4	•	•	•	•	•	
VT41221--N P6		25 000		6,6 - 8,5 - 11 - 14,1 - 18,6 - 22,4	3,2 / 0,5	•	•	•	•	•	
VT41221--N P7	30 000			6,6 - 8,5 - 11 - 14,1 - 18,6 - 22,4	3,2 / 0,5	•	•	•	•	•	
VT41221--R P7		25 000		6,6 - 8,5 - 11 - 14,1 - 18,6 - 22,4	4 / 0,6	•	•	•	•	•	
VT41621--L P6	40 000			6,4 - 8,2 - 10,6 - 13,9 - 16,8	2 / 0,3	•	•	•	•	•	
VT41621--N P7	40 000			6,4 - 8,2 - 10,6 - 13,9 - 16,8	2,5 / 0,4	•	•	•	•	•	
VT42021--N P7		1Bm / 50 000		6,6 - 8,5 - 11,1	2 / 0,3	•	•	•	•	•	
VT50421--	20 000	16 000	12 500	4,5 - 6,7 - 10,1 - 13,5	**	•	•	•	•	•	
VT50821--	40 000	32 000	25 000	6,2 - 8,2 - 10,9 - 14,4	**	•	•	•	•	•	
VT51221--	60 000	50 000		5,9 - 7,7 - 10 - 13,2	**	•	•	•	•	•	
VT51621--	80 000			5,8 - 7,5 - 9,9 - 12	**	•	•	•	•	•	
VT52021--		1Bm / 100 000		6 - 7,9 - 9,6 - 11,5	**	•	•	•	•	•	



VERLINDE is:

The leading French constructor and exporter of hoisting and mechanical handling equipment.

- A group employing 5,000 staff.
- A large range hoisting equipment from 60 to 100.000 kg
- ISO 9001 quality control certified.
- Easily-accessible consultants in over 80 countries.



In France

9 Sales offices, 14 after sale service centres, 11 manufacturing plants for EUROPONT travelling cranes and a national distribution network.

World-wide

Branches in Germany, Holland, Belgium, Italy and distributors in Germany, Spain, Italia, Argentina, Austria, Brazil, Chili, Ireland, United Kingdom, Sweden, Norway, Denmark, China, Thailand, Indonesia, Malaysia, Vietnam, India, United States, etc.

 **VERLINDE**
LIFTING EQUIPMENT
EMMEGIESSSE s.r.l.

Via Giovanni Falcone N° 8 41057 Spilamberto (MO) Italy
Tel 059/785979 Fax 059/785937 - www.emmegiesse.com - info@emmegiesse.com